

## Trouble Shooting Tips

If your solar light does not come on at dusk despite following all instructions please try the following steps:

1. Make sure that the solar light is not affected by any other light source.
2. Ensure the solar light does not stand in the shade all day.
3. Check to see if the batteries are installed correctly.
4. If there is a protective film on the solar panel carefully remove this.

## Care Information

1. Clean any dirt and debris from the solar panel. The panel cannot recharge if the light is obstructed. Use a soft cloth to clean the panel. Do not use abrasives or chemicals that might scratch or damage the UV coating.
2. In a region where snow and ice are likely and the light assembly is covered with snow for an extended period of time the batteries will require a recharge for at least 8 hours.

## Warranty Information

### 1-YEAR LIMITED PRODUCT WARRANTY

This product is covered under a one year limited warranty. Fusion Products Ltd. warrants to the original purchaser that this product is free from defects in materials and workmanship for the period of one year warranty from date of purchase.

**For Technical Support and/or Warranty inquiries  
please contact:**

**Fusion Products Ltd.**

Monday to Friday

8:30-5:00 PM EST

2905 Argentia Road, Unit 2,3

Mississauga, Ontario L5N 8G6

Tel: 1-877-615-1378 Fax: (905) 812-3256

Email: [sales@fusionproducts.ca](mailto:sales@fusionproducts.ca)

# FUSION™

## SOLAR DUAL FACE OUTDOOR LIGHTED CLOCK



**FUSION PRODUCTS LTD.**

**24412**

# Contents

Overview .....	1
About Your Solar Light .....	1
Getting Started .....	1
Important .....	2
Operation .....	2-3
Schematic Diagram .....	3,4
Installation .....	3
Battery Replacement .....	4-5
Trouble Shooting Tips .....	6
Care Information .....	6
Warranty Information .....	6

## Battery Replacement (Clock)

**STEP 1:** Remove the screws on the outside perimeter of the clock (Figure 1).

**STEP 2:** Carefully open the cover of the clock (Figure 2).

**STEP 3:** Remove battery compartment cover (if applicable). See Figure 3.

**STEP 4:** Carefully remove the old battery from the battery compartment. Replace the battery with an equivalent new battery; ensuring the correct polarity is observed (Figure 4).

**STEP 5:** Adjust the dial as required to set the time (Figure 5).

**STEP 6:** Reassemble the unit by reversing the above procedure (Figures 6,10,11).

**Caution: Rechargeable batteries contain Nickel-Cadmium or Nickel-Metal Hydride and must be recycled or disposed of properly. Do not mix old and new batteries. Do not mix alkaline, standard (carbon-zinc), or rechargeable batteries. Do not dispose of batteries in fire. Batteries may explode or leak.**

**Caution: Always dispose of batteries at a proper disposal facility. Do not dispose in fire or attempt to open sealed batteries. Use only the similar rating and type that was shipped with the original light.**

- Always purchase the correct size and grade of battery most suitable for intended use.
- Replace battery of a set at the same time.
- Clean the battery contacts and also those of the device prior to battery installation.
- Remove battery from equipment which is not to be used for an extended period of time.
- Remove used battery promptly.

## Battery Replacement (Lights)

**STEP 1:** Remove the screws on the outside perimeter of the clock (Figure 1).

**STEP 2:** Carefully open the cover of the clock (Figure 2).

**STEP 3:** Locate the battery compartment for the solar rechargeable battery. Remove the screws for the battery compartment cover (Figure 7).

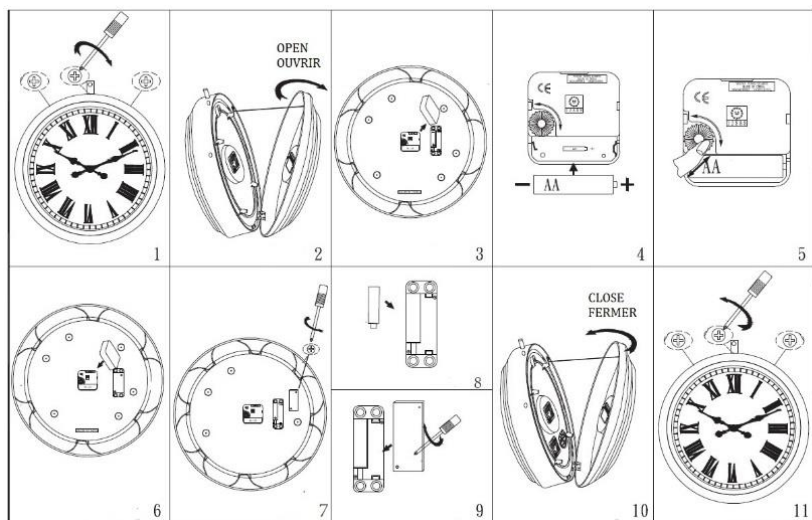
**STEP 4:** Carefully remove the old battery from the battery compartment.

**STEP 5:** Replace the battery with an equivalent new solar rechargeable battery; ensuring the correct polarity is observed (Figure 8).

**STEP 6:** Reassemble the unit by reversing the above procedure (Figures 9,10,11).

**STEP 7:** Fully charge the battery in the <OFF> position for 2 days.

**STEP 8:** Place the ON/OFF pushbutton switch in the <ON> position. The pushbutton switch is located on the outside perimeter of the clock. This switch is to operate the lights only. The lights will automatically turn on once it gets dark.



## Overview

This product is designed to the highest technical specifications and standards. It will supply years of maintenance free use. Please read these instructions thoroughly prior to installation, then store in a safe place for future reference. If at any time you are unclear about this product, or require further assistance please do not hesitate to contact our trained professionals operating the customer support line at 1-877-615-1378 Monday to Friday between the hours 8:30 AM to 5:00 PM Eastern Standard Time or email [sales@fusionproducts.ca](mailto:sales@fusionproducts.ca)

## About Your Solar Light

During the day your solar panel will convert the sun's light and/or UV rays into electrical power that will charge the rechargeable battery. When it becomes dark, the solar light will turn on using the power stored on the rechargeable battery as it will detect no day light. The units light output strength and time depends on how many hours and how much sunlight and/or UV rays your panel absorbs throughout the day.

For maximum output place the solar panel in an area where there is direct sunlight for at least 8 hours in a given day. Do not install your solar light in a shaded area. The selected location should not be near night time light sources such as; porch lights, street lights or pool lights as these may cause the solar light to turn off prematurely.

## Getting Started

Please do not throw away any packing material until all parts are verified as present.

## Important

- Fully charge the battery before first use. Charge under direct sunlight in the <OFF> position for 2 days.
- For best results, locate your solar lamp in a position where it can get direct sunlight on the solar panel and generally free from cover and shade.
- Keep your solar lights away from other night-time light sources, such as streetlights.
- Make sure the solar panels are not covered by dust, snow and debris. Clean it with a soft damp cloth or paper towel periodically. Avoid the use of abrasive cleaning agents.
- Use only solar rechargeable AA batteries for your solar lights, and regular AA batteries for the clock function. Replace batteries with the same size each year for optimum performance.
- The performance of the solar light will vary with the time of year. It will deliver more light when it has had a full day in the sun rather than a day in overcast weather.

## Operation (Lights)

**NOTE: THERE IS (1) PRE-INSTALLED AA SOLAR RECHARGEABLE BATTERY TO OPERATE THE LIGHTS.**

**STEP 1:** Fully charge the battery before first use. Charge under direct sunlight for 2 days.

**STEP 2:** For daily operation, place the ON/OFF pushbutton switch in the <ON> position. The pushbutton switch is located on the outside perimeter of the clock. This switch is to operate the lights only. The lights will automatically turn on once it gets dark.

## Operation (Clock)

**NOTE: THERE IS (1) PRE-INSTALLED REGULAR AA BATTERY TO OPERATE EACH CLOCK FACE. BOTH CLOCK FACES OPERATE ON SEPARATE BATTERIES.**

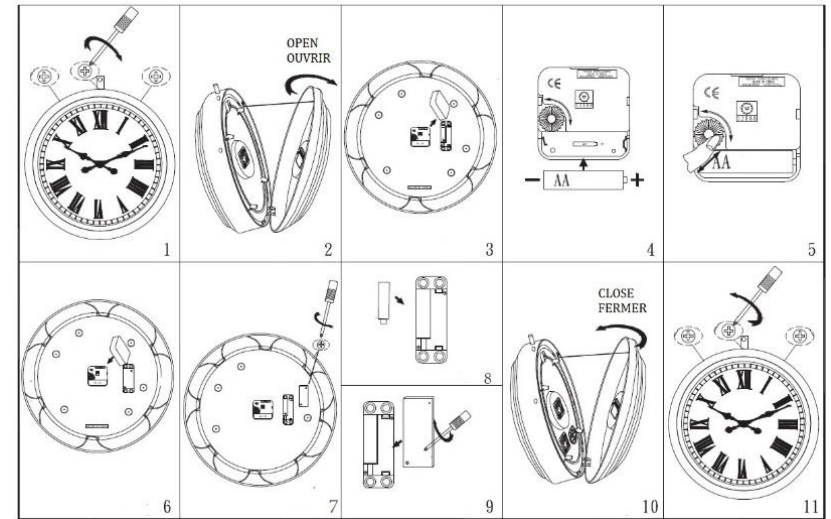
**STEP 1:** Remove the screws on the outside perimeter of the clock (Figure 1).

**STEP 2:** Carefully open the cover of the clock (Figure 2).

**STEP 3:** Adjust the dial as required to set the time (Figure 5). You must adjust both dials for both clock faces.

**STEP 4:** Reassemble the unit by reversing the above procedure (Figures 10, 11).

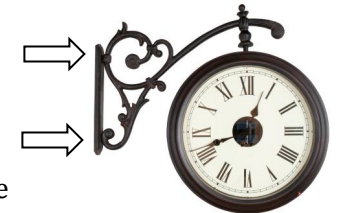
## Schematic Diagram



## Installation

### STEP 1:

Locate the pre-drilled holes (4) in the wall mount bracket.



### STEP 2:

Using the wall mount bracket, mark the holes on the wall in the desired location you wish to mount the clock.

### STEP 3:

Using a drill, pre-drill holes for the screws and/or wall anchors. If using wall anchors, pre-drill and gently tap each anchor into place first before securing with screws.

### STEP 4:

Secure wall mount bracket with screws through each of the holes (4) in the bracket.