

Warranty Information

1-YEAR LIMITED PRODUCT WARRANTY

This product is covered under a one year limited warranty. Fusion Products Ltd. warrants to the original purchaser that this product is free from defects in materials and workmanship for the period of one year warranty from date of purchase.

For Technical Support and/or Warranty inquiries

please contact:

Fusion Products Ltd.

Monday to Friday

8:30-5:00 PM EST

2905 Argentia Road, Unit 2,3

Mississauga, Ontario L5N 8G6

Tel: 1-877-615-1378 Fax: (905) 812-3256

Email: sales@fusionproducts.ca



4 SOLAR POST CAP LIGHTS



FUSION PRODUCTS LTD.

User Manual for Models: 16707, 16709, 16850

Contents

Overview1

About Your Solar Light1

Getting Started1

Important2

Operation2

Installation3

Battery Replacement4

Trouble Shooting Tips5

Care Information5

Warranty Information6

Trouble Shooting Tips

If your solar light does not come on at dusk despite following all instructions please try the following steps:

1. Make sure that the solar light is not affected by any other light source.
2. Ensure the solar light does not stand in the shade all day.
3. Check to see if the batteries are installed correctly.
4. If there is a protective film on the solar panel carefully remove this.
5. Remove the pull tab from the battery compartment.

Care Information

1. Clean any dirt and debris from the solar panel. The panel cannot recharge if the light is obstructed. Use a soft cloth to clean the panel. Do not use abrasives or chemicals that might scratch or damage the UV coating.
2. In a region where snow and ice are likely and the light assembly is covered with snow for an extended period of time the batteries will require a recharge for at least 8 hours.

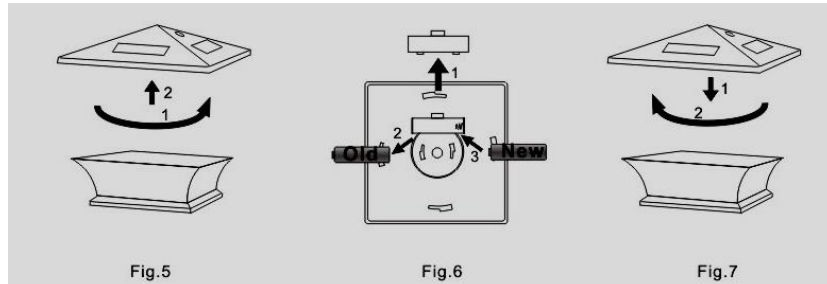
Battery Replacement

STEP 1:

Turn the solar housing in a counter-clockwise direction until it separates from the lens (Figure 5).

STEP 2:

Remove the battery compartment cover. Carefully remove the old battery from the battery compartment (Figure 6).



STEP 3:

Replace the battery with an equivalent new solar rechargeable battery; ensuring the correct polarity is observed (Figure 6).

STEP 4:

Re-attach the solar housing to lens by turning clockwise until secure (Figure 7).

Caution: Rechargeable batteries contain Nickel-Cadmium or Nickel-Metal Hydride and must be recycled or disposed of properly. Do not mix old and new batteries. Do not mix alkaline, standard (carbon-zinc), or rechargeable batteries. Do not dispose of batteries in fire. Batteries may explode or leak.

Overview

This product is designed to the highest technical specifications and standards. It will supply years of maintenance free use. Please read these instructions thoroughly prior to installation, then store in a safe place for future reference. If at any time you are unclear about this product, or require further assistance please do not hesitate to contact our trained professionals operating the customer support line at 1-877-615-1378 Monday to Friday between the hours 8:30 AM to 5:00 PM Eastern Standard Time or email sales@fusionproducts.ca

About Your Solar Light

During the day your solar panel will convert the sun's light and/or UV rays into electrical power that will charge the rechargeable battery. When it becomes dark, the solar light will turn on using the power stored on the rechargeable battery as it will detect no day light. The units light output strength and time depends on how many hours and how much sunlight and/or UV rays your panel absorbs throughout the day.

For maximum output place the solar panel in an area where there is direct sunlight for at least 8 hours in a given day. Do not install your solar light in a shaded area. The selected location should not be near night time light sources such as; porch lights, street lights or pool lights as these may cause the solar light to turn off prematurely.

Getting Started

Please do not throw away any packing material until all parts are verified as present.

Important

- Fully charge the battery before first use. Charge under direct sunlight for 2 days.
- For best results, locate your solar lamp in a position where it can get direct sunlight on the solar panel and generally free from cover and shade.
- Keep your solar lights away from other night-time light sources, such as streetlights.
- Make sure the solar panels are not covered by dust, snow and debris. Clean it with a soft damp cloth or paper towel periodically. Avoid the use of abrasive cleaning agents.
- Use only rechargeable batteries for your solar lights. Replace with a new battery of the same size each year for optimum performance.
- The performance of the solar light will vary with the time of year. It will deliver more light when it has had a full day in the sun rather than a day in overcast weather.

Operation

For First Time Use:

STEP 1:

Remove the lens from the solar housing by carefully holding onto the solar housing and turning the lens in a counter-clockwise direction.

STEP 2:

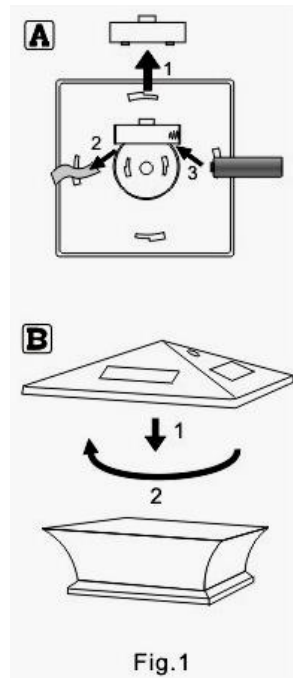
Remove the pull tab from the battery compartment.

STEP 3:

Secure lens back to solar housing.

STEP 4:

Fully charge the battery before first use. charge under direct sunlight for 2 days. Your solar light will automatically turn on once it gets dark.



Installation

STEP 1:

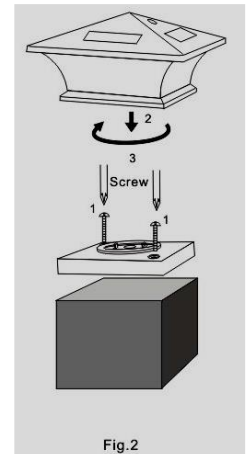
Select the correct adapter size depending on the size of the post.

STEP 2:

Mark holes and pre-drill if necessary before securing adapter to post with screws (Figure 2). If attaching adapter to composite, vinyl, PVC, or other; secure to post by pushing adapter onto post (Figure 3).

STEP 3:

Attach the assembled light to the adapter by turning clockwise until secure (Figure 2,3).



Routed Post Sleeve Option

STEP 1:

Remove the lens from the solar housing by carefully holding onto the solar housing and turning the lens in a counter-clockwise direction.

STEP 2:

Select the correct adapter size depending on the size of the post.

STEP 3:

Secure adapter to post by pushing adapter onto post (Figure 4).

STEP 4:

Attach solar housing to adapter by turning clockwise until secure (Figure 4).

